

RALEIGH FURNITURE BUILDING

119 E. HARGETT STREET
RALEIGH, NC 27601



Building constructed in 1914

Originally home to the Raleigh Furniture Store and later to Kimbrell's Furniture



Great location on Hargett Street, the best pedestrian street in downtown Raleigh

Across the corner from urban green park, Moore Square, flanked by arts and cultural entertainment venues and restaurants

Beautiful retail / restaurant space in the heart of downtown Raleigh, two blocks from the State Capitol

Walking distance to restaurants, museums, galleries, city parks and Progress Energy Center for the Performing Arts

First Floor: 3,800 sq ft retail or restaurant space with a large, highly visible storefront

- Three floors total approximately 18,000 sq ft of flexible, open floor plan space
- Beautiful, original brick facade
- 15- to 20-foot ceilings
- Hardwood floors, natural light through large windows
- Convenient access to parking deck
- Ready for tenant upfit

empire1792.com

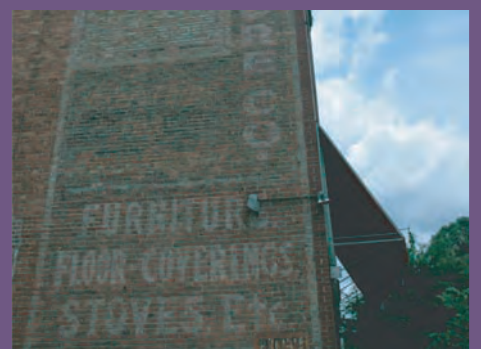
P 919.834.8350

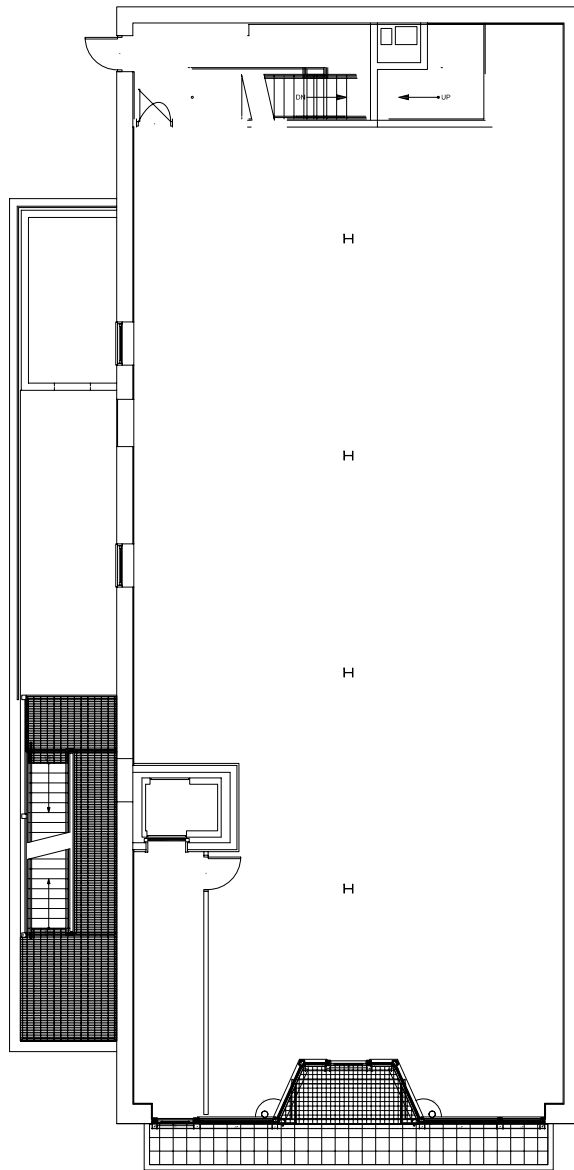
F 919.839.0382

Sixth Floor
Raleigh, NC 27601



For more information, contact Empire Properties Brokerage at 919 834 8350.





3,800 SQ FT

GROUND LEVEL



EMPIRE PROPERTIES
133 FAYETTEVILLE ST
SIXTH FLOOR
RALEIGH NC 27601

RALEIGH FURNITURE BUILDING
119 E. HARGETT STREET
RALEIGH, NORTH CAROLINA