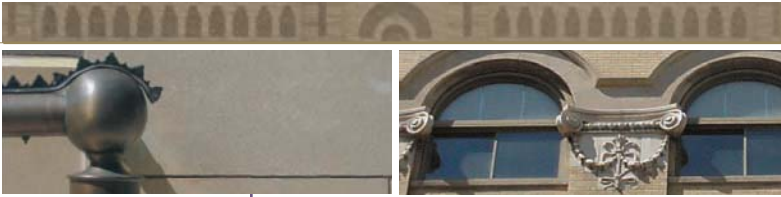


MASONIC TEMPLE BUILDING

133 FAYETTEVILLE STREET
RALEIGH, NC 27601
SUITE 210



Raleigh's first skyscraper, constructed in 1907

National Historic Property, originally the Masonic Temple



PROPERTY OVERVIEW

Great location on the corner of Fayetteville Street, downtown Raleigh's Main Street, and Hargett Street, the best pedestrian street in downtown Raleigh

One block from the State Capitol

Walking distance to restaurants, museums, galleries, city parks and Progress Energy Center for the Performing Arts & the convention center

- Spaces range from 1,596 – 7,163 sq ft
- Newly renovated spaces
- Basement storage available
- Parking available for lease in adjacent deck

SPACE AVAILABLE OVERVIEW SUITE 210

- 1,726 sq ft
- Terrific views of Hargett Street
- Turn-key condition
- On-site property management
- Card-access security system

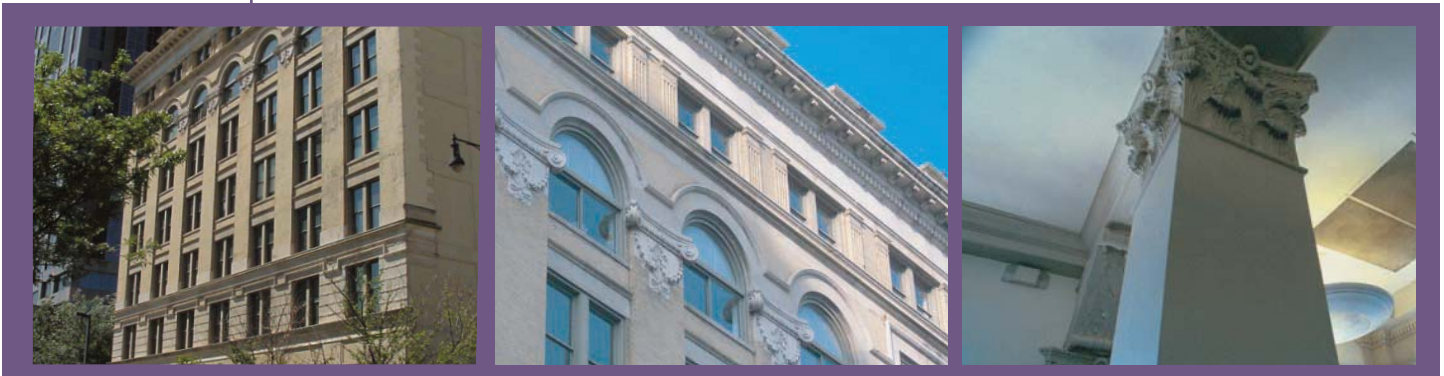
For more information, contact Empire Brokerage Services at 919 834 8350.

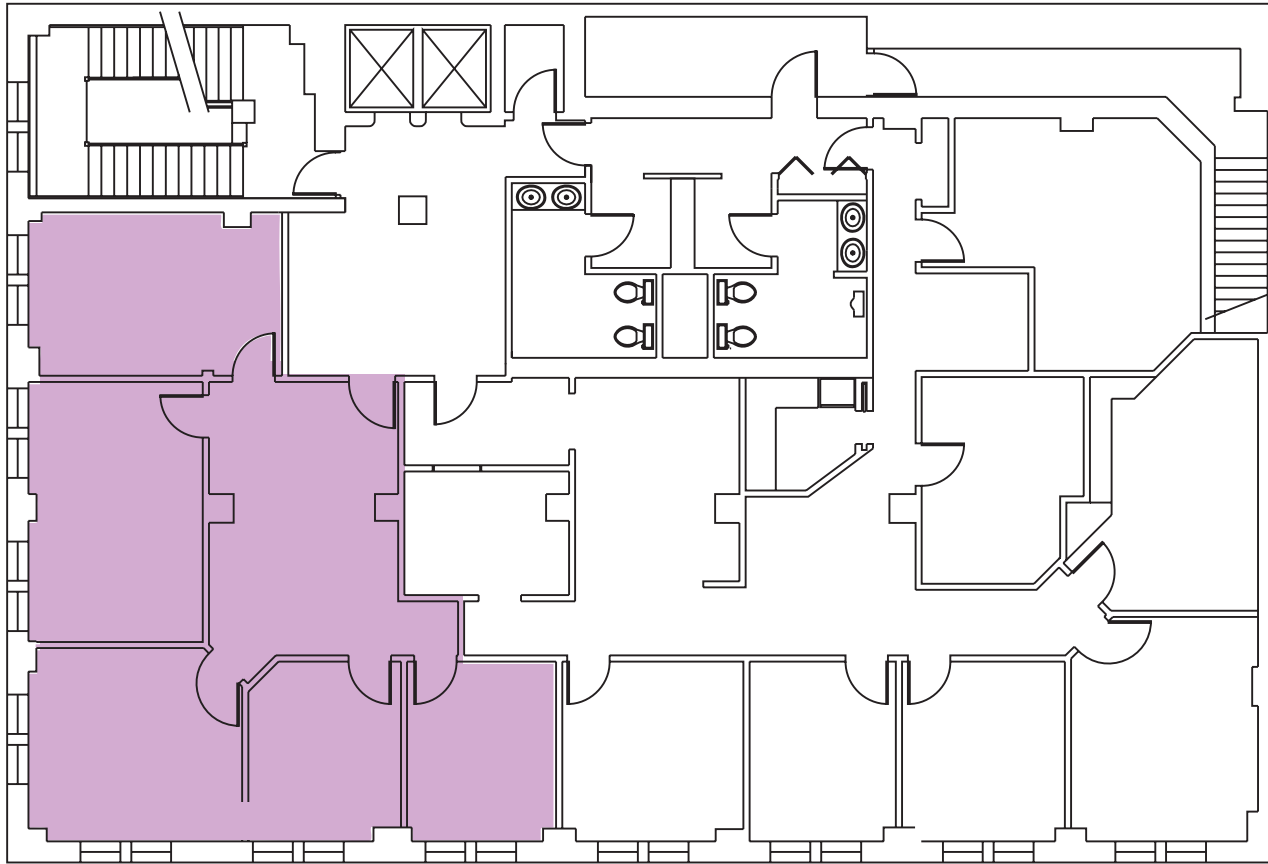
empire1792.com

P 919.834.8350

F 919.839.0382

133 Fayetteville St
Sixth Floor
Raleigh, NC 27601





SUITE 210
1726 SF



EMPIRE PROPERTIES
133 FAYETTEVILLE ST
SIXTH FLOOR
RALEIGH NC 27601

MASONIC TEMPLE BUILDING
133 FAYETTEVILLE STREET
RALEIGH, NORTH CAROLINA